

SUMMIT CENTRE

200 BOUDREAU ROAD | ST. ALBERT

A photograph of the Summit Centre building, a modern multi-story structure with a facade of grey panels and horizontal bands of brown and white. The building features large glass windows and several white awnings. The text "SUMMIT CENTRE" is visible on the upper part of the building, and "200 BOUDREAU RD" is visible on a lower section. The image is overlaid with a semi-transparent blue filter.

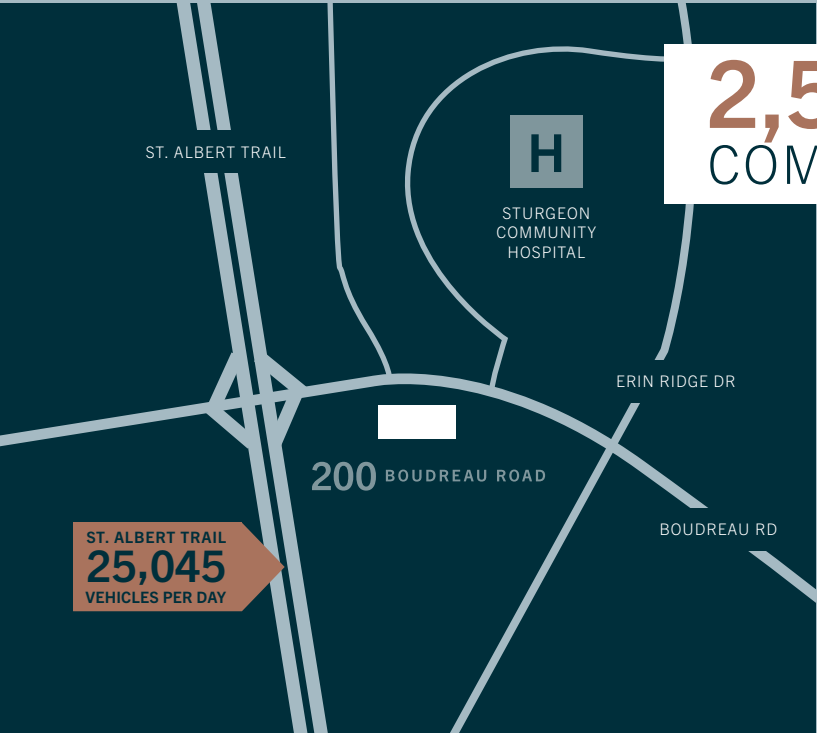
200 BOUDREAU RD

SUMMIT CENTRE

200 BOUDREAU ROAD | ST. ALBERT

LOCATION + OVERVIEW	3
AVAILABLE SPACE	4
ABOUT	5
CONTACT	6

LOCATION + OVERVIEW



2,541 SF
COMMERCIAL

**MULTIPLE
SPACES
AVAILABLE**

This commercial property is across from the Sturgeon Community Hospital and is designed to host medical offices and professional businesses.

POPULATION

1 KM	6,319
3 KM	44,500
5 KM	69,928

AVERAGE INCOME

1 KM	\$153,969
3 KM	\$161,620
5 KM	\$152,714

AVAILABLE SPACE

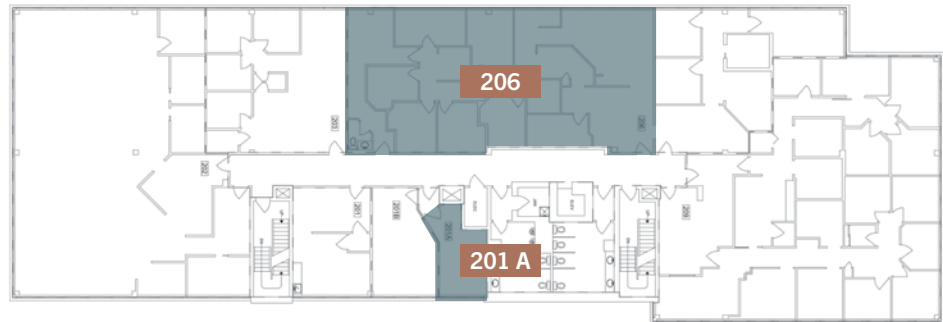


UNIT 201 A 246 SF

UNIT 206 2,296 SF

***CONTIGUOUS**

BASE RENT: MARKET
OP. COST: \$15.00



SUMMIT CENTRE



- ACROSS FROM STURGEON COMMUNITY HOSPITAL.
- BUILDING EXTERIOR & INTERIOR RENOVATIONS COMPLETED AUGUST 2021.
- COMPELLING INCENTIVE PACKAGE AVAILABLE.
- MOVE-IN READY MEDICAL SPACE WITH SINKS AND PROCEDURE ROOMS.



CONTACT

780-459-LAND

@LANDREX_INC

